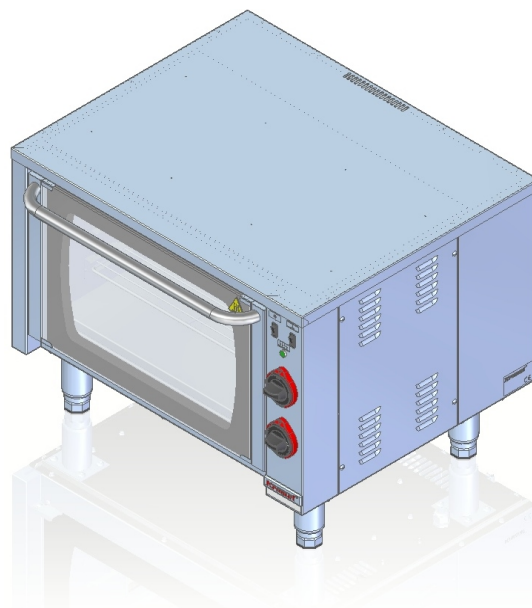


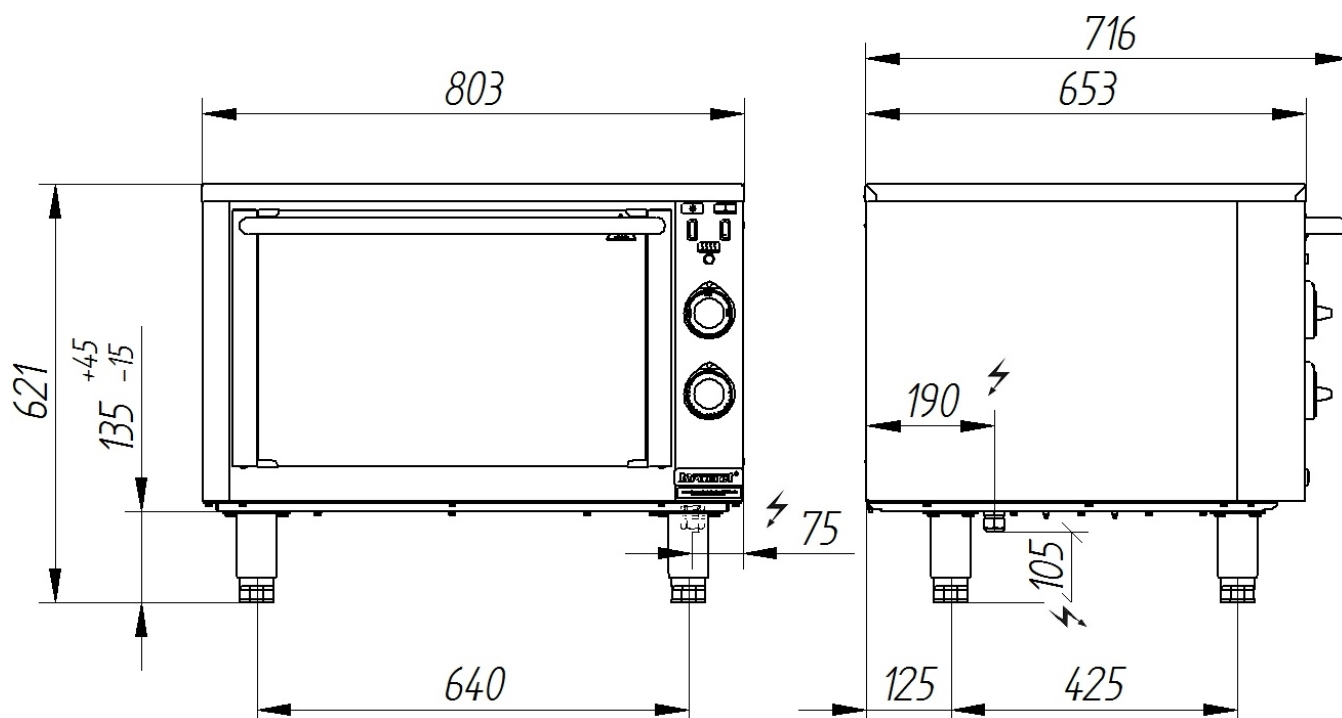
<b>Model:</b>	<b>700.PE-1T</b>	800x650x620 [mm]
<b>Electric oven</b>		
<b>Power rating</b>	3.5 kW	
<b>Temperature range</b>	50°–300°C	
<b>Chamber</b>	<b>Chamber dimensions</b>	575x450x316 mm
	<b>GN</b>	2 x GN1/1
<b>Rated voltage, type of current</b>	400V 3N~ 50Hz	
<b>Work range switch</b>	Up, down, up-down	
<b>Air flow</b>	In up-down position	
<b>Chamber lighting</b>	YES	



#### Description:

Electric oven with air flow is made of high-grade stainless steels. Working chamber made of AISI 304 stainless steel (mirror layer). Two levels for containers GN1/1. Long-life, fast heating elements. Bar grate included. Glass door for viewing of products being processed. Removable guides.

#### 700.PE-1T



The picture is for reference only; final product may be slightly different from the presented example.