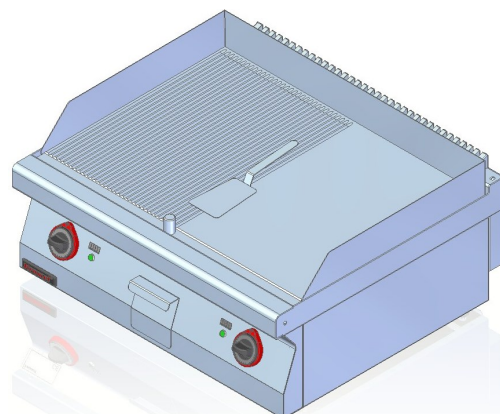


<b>Model:</b>	<b>700.PBE-800GR</b>	800x700x280 [mm]
	<b>700.PBE-800GR/S-800</b>	800x700x900 [mm]
	<b>700.PBE-800GR/T-800</b>	800x700x900 [mm]

**Working area** 796x560 mm

**Power rating** 9.6 kW

**Rated voltage, type of current** 400V 3N~



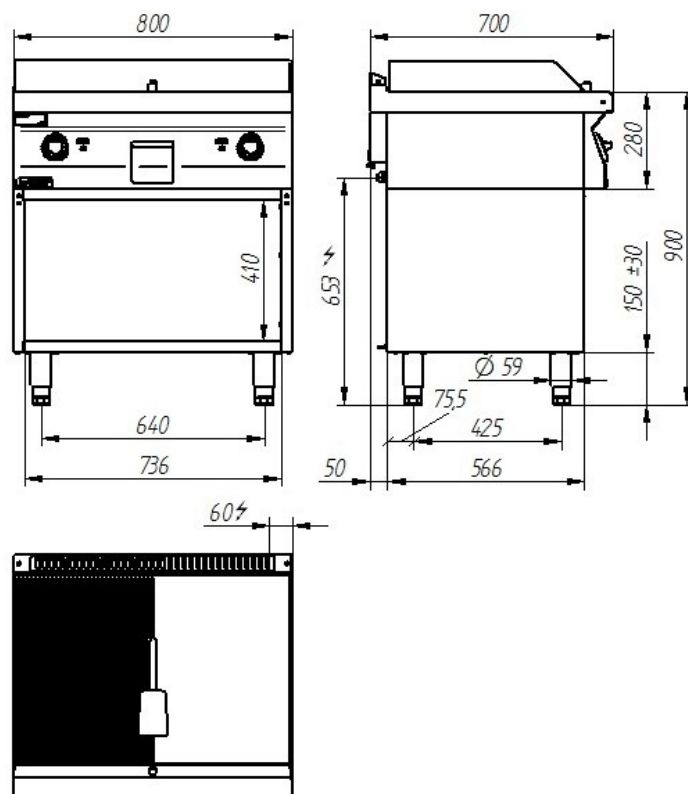
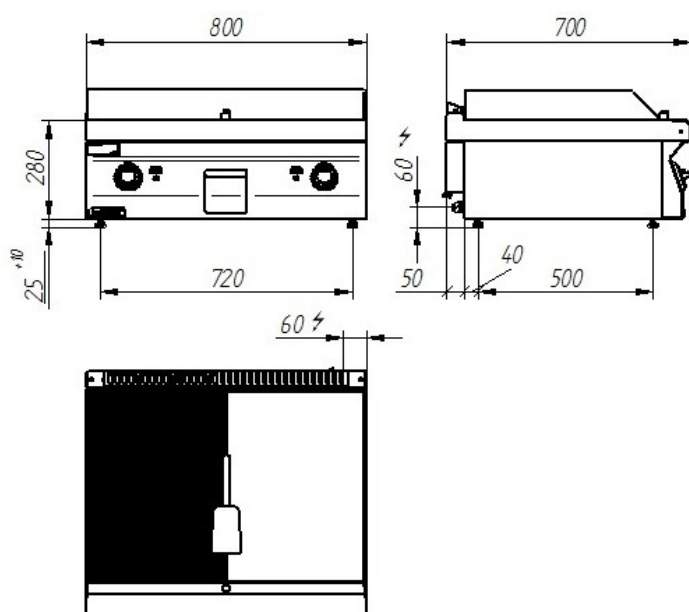
### Description:

Griddles are made of high-grade stainless steels. Top plate made of AISI 304 stainless steel with thickness  $\approx 1.5$ mm. Chrome-plated (half smooth, half grooved) working plate ensures uniform distribution of temperatures over the whole surface.

### 700.PBE-800GR

### 700.PBE-800GR/S-800

### 700.PBE-800GR/T-800



The picture is for reference only; final product may be slightly different from the presented example.

**60** LAT  
NA RYNKU

**Tradition and experience**