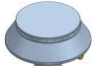
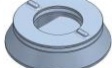


Model: 700.KG-4/PG-1 800x700x900 [mm]**Gas cooker**

Burners	Number	2	2
		104 mm	128 mm
	Ø		
	Power rating	4.5 kW	7.5 kW
		3870 kcal/h	6450 kcal/h

Gas oven

	Power rating	4.5 kW
		3869 kcal/h

Chamber	Chamber dimensions	575x450x316 mm
	GN	GN1/1

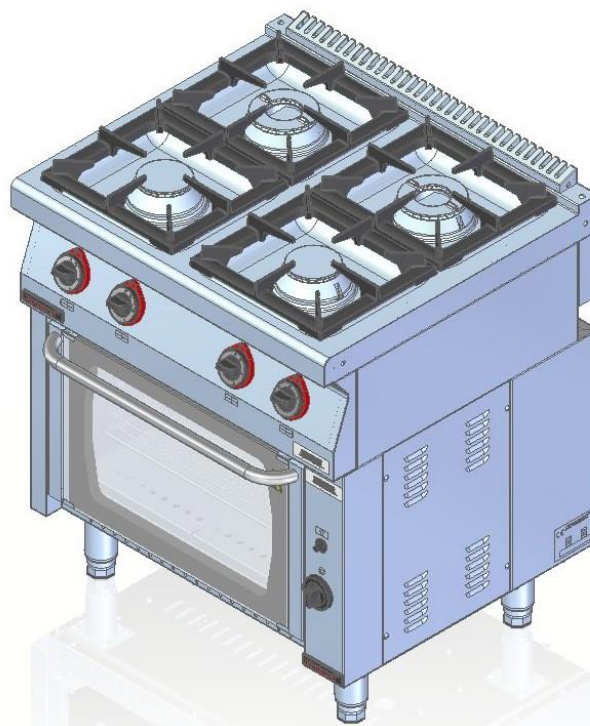
Oven temperature adjustment range	150°–300°C
-----------------------------------	------------

Rated voltage, type of current	230V ~
--------------------------------	--------

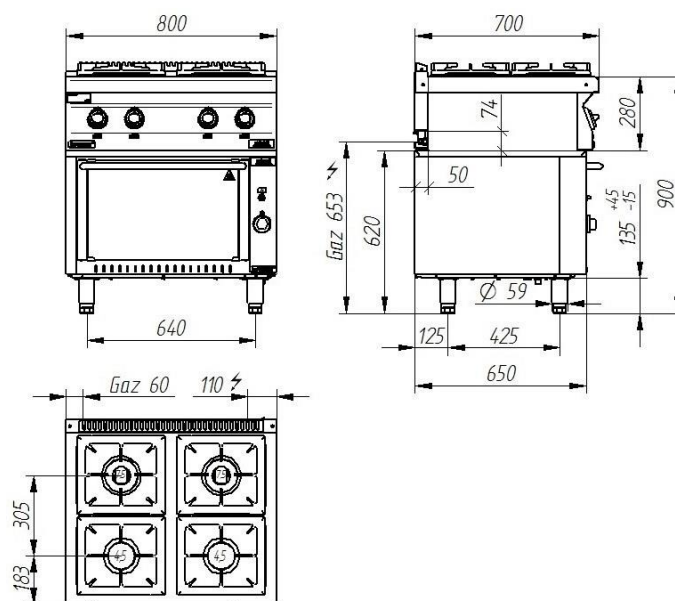
Gas connection	R 1/2
----------------	-------

Power rating	28.5 kW
--------------	---------

Gas consumption	E G20 [20mbar]	m³/h	3.73
	Lw G27 [20mbar]	m³/h	4.14
	3B/P G30 [37mbar]	kg/h	2.55

**Description:**

Devices made of high-grade stainless steels. Working plate made of AISI 304 stainless steel with thickness \neq 1.5mm. Burners and grates made of cast-iron. Removable bowls for liquids ejected when cooking under burners. Adjustable burner power. Cooker is equipped with pilot burner with flame safety device. Grill adapters (smooth, grooved), reduction adapters and Wok grate can be used. Bar grate included. Glass door for viewing of products being processed.

700.KG-4/PG-1

The picture is for reference only; final product may be slightly different from the presented example.

60 LAT
NA RYNKU

Tradition and experience