


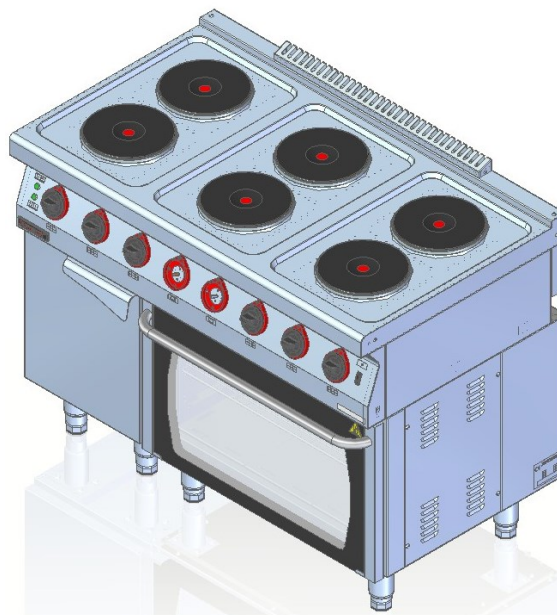
Model: 700.KE-6/PE-2/S 1200x700x900 [mm]

Electric cooker

Heating plates	Number	6
		220 mm
	Ø	
	Power rating	2.6 kW
	Power rating	15.6 kW

Electric oven

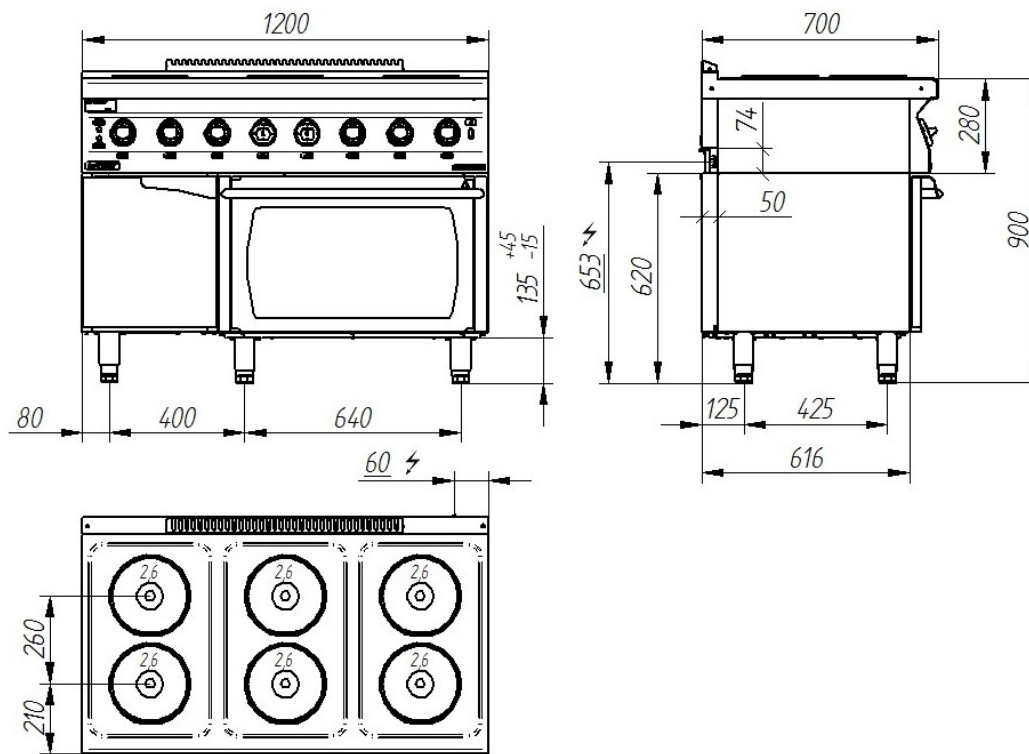
	Power rating	6.5 kW
	Temperature range	50°–250°C
Chamber	Chamber dimensions	695x550x310 mm
	GN	GN2/1
	Rated voltage, type of current	400V 3N~
	Power rating	22.1 kW



Description:

Electric cookers are made of high-grade stainless steels. Working plate made of AISI 304 stainless steel with thickness ≠ 1.5mm. Long-life, fast heating plates. Adapters allowing pots to be moved between fields can be used. Bar grate included. Glass door for viewing of products being processed.

700.KE-6/PE-3



The picture is for reference only; final product may be slightly different from the presented example.