


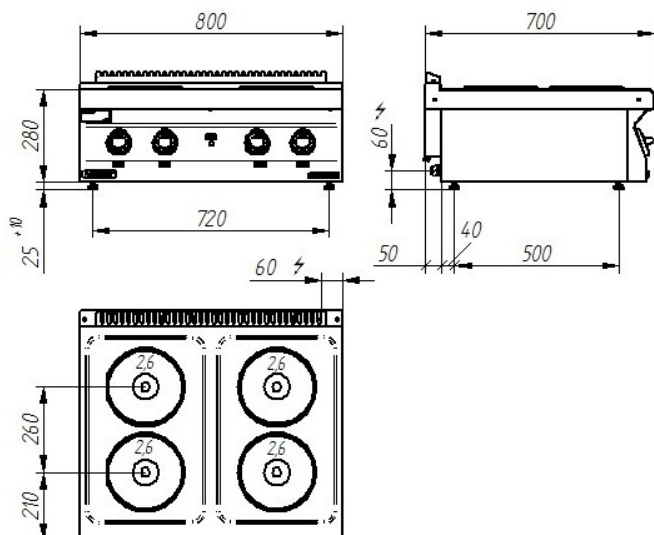
|                                       |                       |   |
|---------------------------------------|-----------------------|---|
| <b>Model:</b>                         | <b>700.KE-4</b>       | 800x700x280 [mm]  |
|                                       | <b>700.KE-4/S-800</b> | 800x700x900 [mm]  |
|                                       | <b>700.KE-4/T-800</b> | 800x700x900 [mm]  |
| <b>Heating plates</b>                 | <b>Number</b>         | 4   |
|                                       |                       | 220 mm  |
|                                       | <b>Ø</b>              |  |
|                                       | <b>Power rating</b>   | 2.6 kW  |
| <b>Power rating</b>                   |                       | 10.4 kW   |
| <b>Rated voltage, type of current</b> |                       | 400V 3N~  |



### Description:

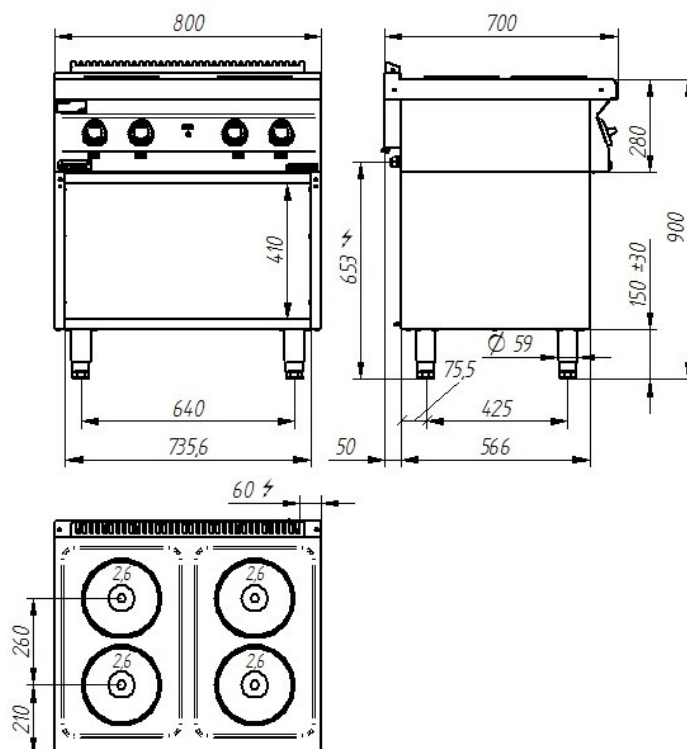
Electric cookers are made of high-grade stainless steels. Working plate made of AISI 304 stainless steel with thickness  $\neq 1.5$ mm. Long-life, fast heating plates. Adapters allowing pots to be moved between fields can be used.

### 700.KE-2



### 700.KE-4/S-800

### 700.KE-4/T-800



The picture is for reference only; final product may be slightly different from the presented example.

**60** LAT  
NA RYNKU

Tradition and experience