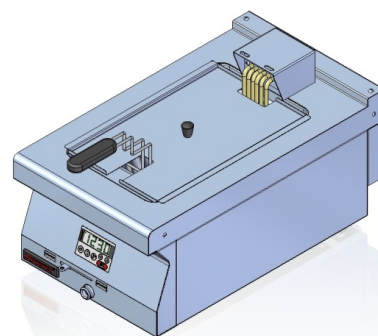


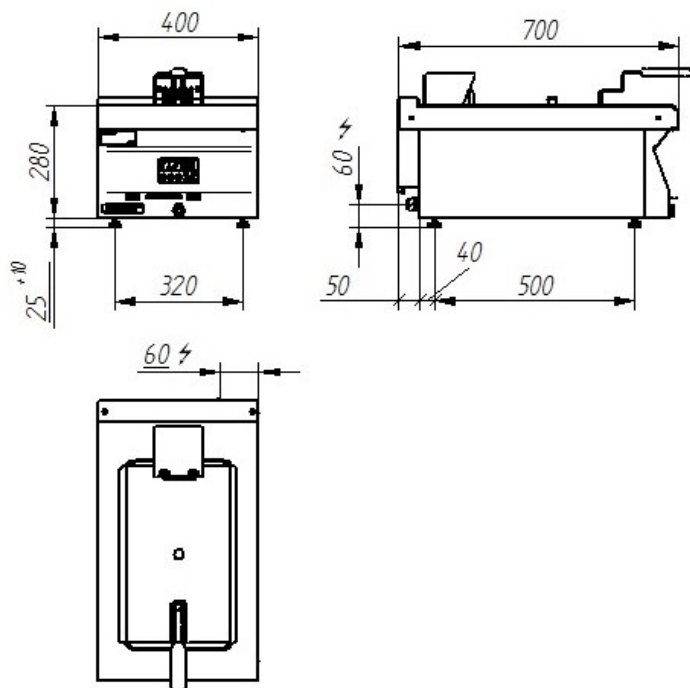
Model:	700.FE-10f	400x700x280 [mm]
	700.FE-10f/S-400	400x700x900 [mm]
	700.FE-10f/T-400	400x700x900 [mm]
Power rating	8 kW	
Working capacity	8 dm ³	
Time of frying fat heating from 20 to 200°C	7 min	
Rated voltage, type of current	400V 3N~	



Description:

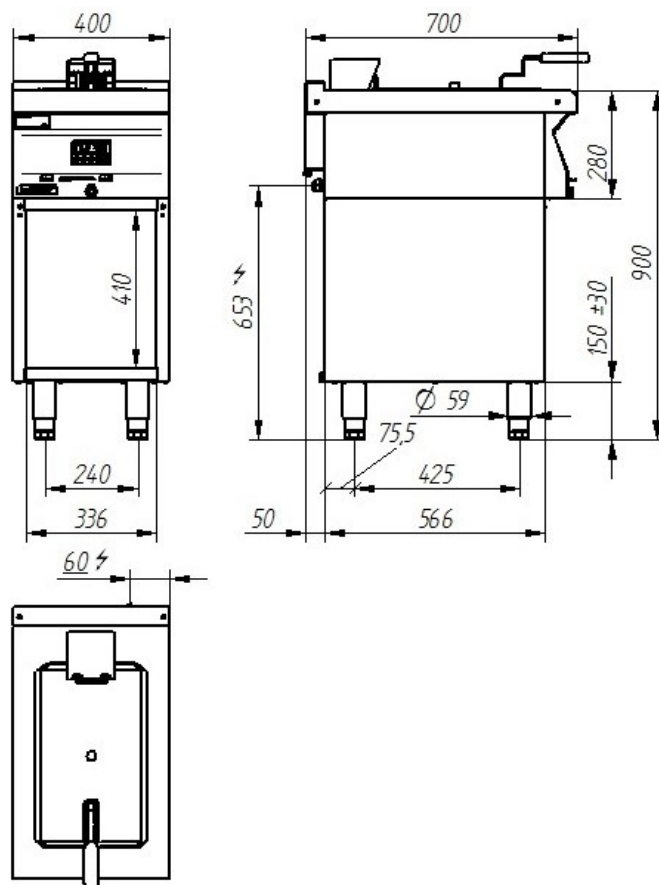
Electric fryers are made of high-grade stainless steels. Working plate made of AISI 304 stainless steel with thickness ≠ 1.5mm. On front table of the device, timer controlling frying fat temperature and time is installed. Temperature adjustment between 50° and 200°C. Tank with cool zone.

700FE-10f



700.FE-10f/S-400

700.FE-10f/T-400



The picture is for reference only; final product may be slightly different from the presented example.

60 LAT
NA RYNKU

Tradition and experience