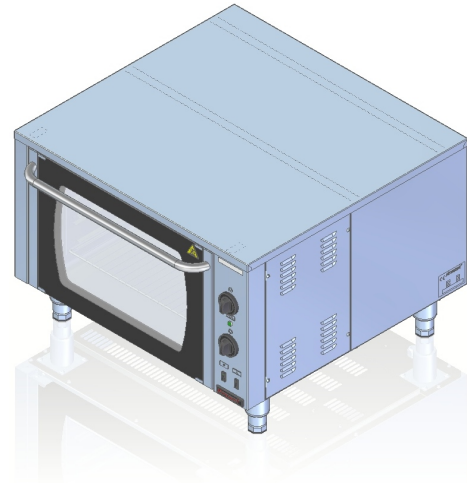


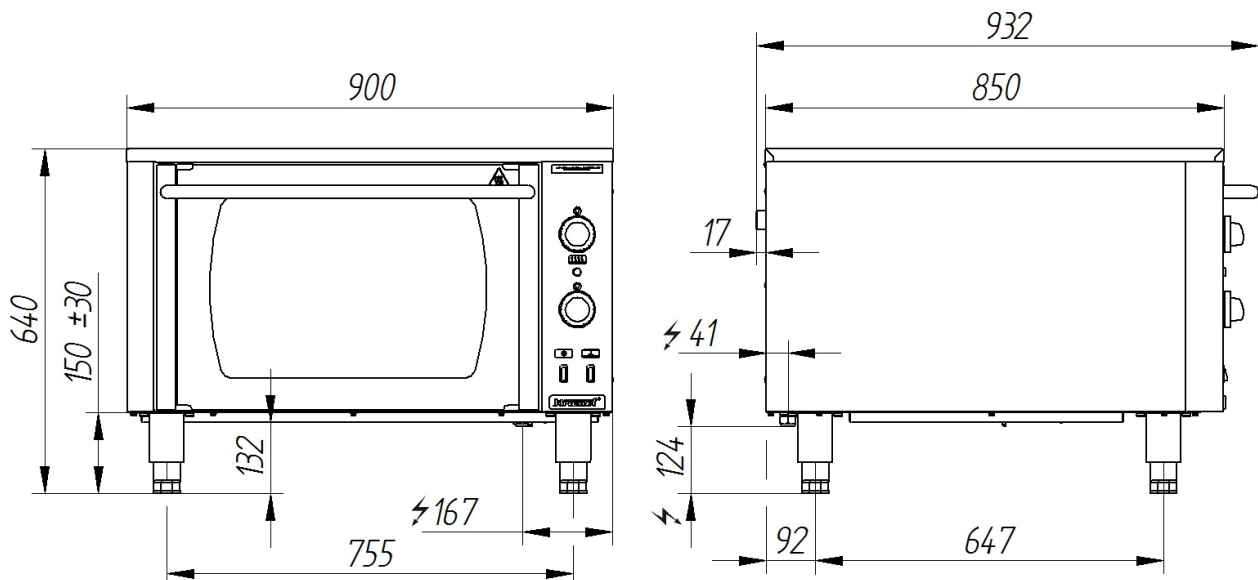
Model:	000.PE-1T	900x850x640 [mm]
	000.PE-1T/T-900	900x870x1260 [mm]
Electric convection oven		
	Power rating	7 kW
	Temperature range	50°–250°C
Chamber	Chamber dimensions	535x650x360 mm
	GN	3 x GN2/1
	Number of chambers	1
	Rated voltage, type of current	400V 3N~ 50Hz
	Chamber lighting	YES



Description:

Electric convection oven with air flow is made of high-grade stainless steels. Working chamber made of AISI 304 stainless steel (mirror layer). Rounded radii in chamber. Two heating elements with two fans ensure uniform temperature distribution. Three levels for containers GN2/1. Long-life, fast heating elements. Bar grate included. Glass door for viewing of products being processed. Removable guides. As an option, base with storage shelf to be mounted under the oven can be ordered, ref. 000.T-900.

000.PE-1T



The picture is for reference only; final product may be slightly different from the presented example.