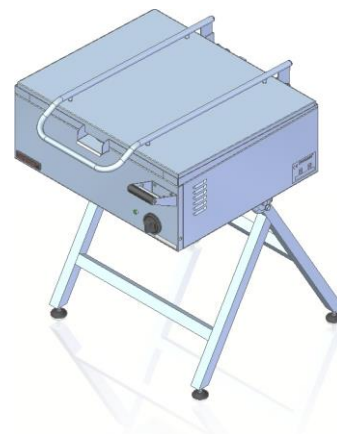


<b>Model:</b>	<b>000.PE-025s</b>	700x600x870 [mm]
<b>Power rating</b>		6,5 kW
<b>Capacity</b>		37 dm <sup>3</sup>
<b>Working area</b>		0.25 m <sup>2</sup>
<b>Temperature range</b>		50–250°C
<b>Bowl dimensions</b>		565x425x150
<b>Rated voltage, type of current:</b>		400V 3N~

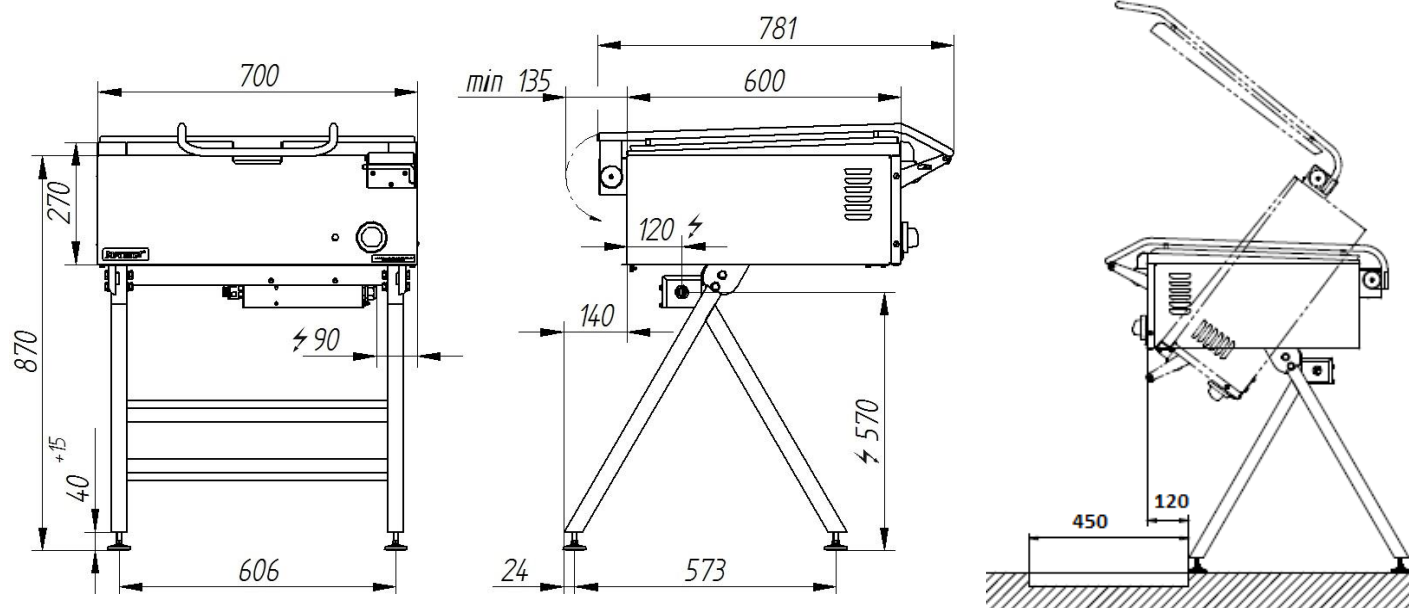


### Description:

Electric pans are made of high-grade stainless steels. Working bottom made of AISI 304 stainless steel. Bowl bottom ensures uniform temperature distribution. Pan with manual bowl-tilting ratchet mechanism. Bowl tilting up to 45°C. Setting of cover in any position under an angle from 0° to 90°.

### 000.PE-025s

### Location of drain grid



The picture is for reference only; final product may be slightly different from the presented example.