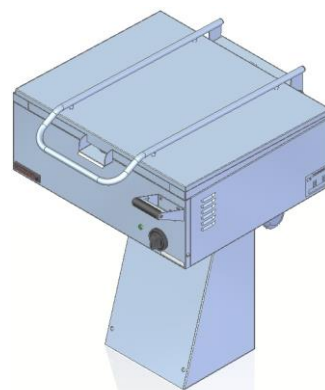


Model:	000.PE-025N	700x600x850 [mm]
Power rating	6,5 kW	
Capacity	37 dm ³	
Working area	0.25 m ²	
Temperature range	50–250°C	
Bowl dimensions	565x425x150	
Rated voltage, type of current:	400V 3N~	

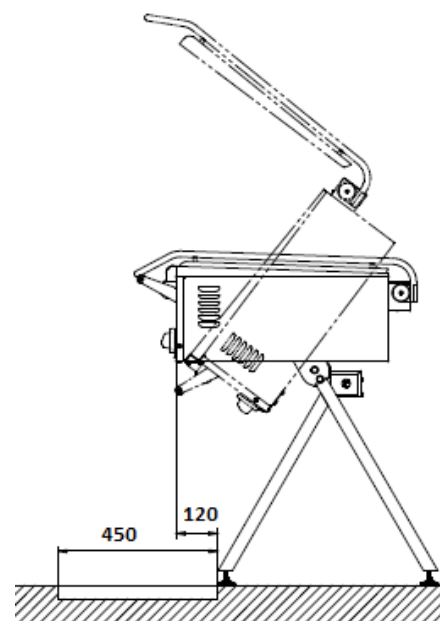
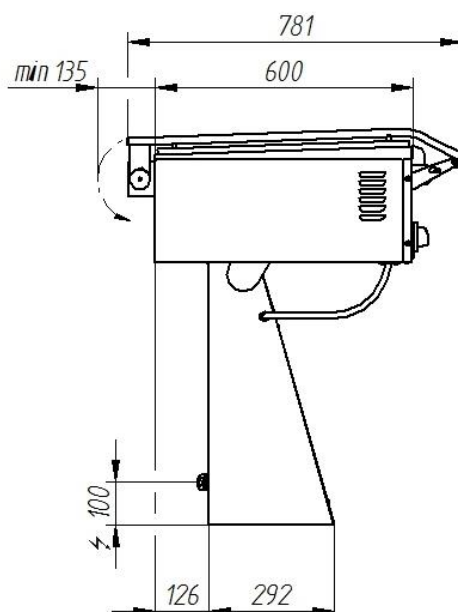
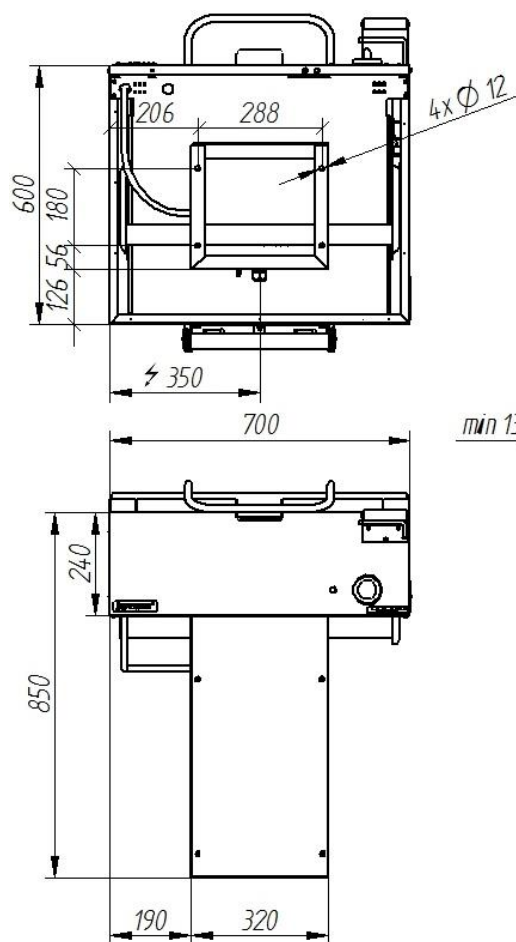


Description:

Electric pans are made of high-grade stainless steels. Working bottom made of AISI 304 stainless steel. Bowl bottom ensures uniform temperature distribution. Pan with manual bowl-tilting ratchet mechanism. Bowl tilting up to 45°C. Setting of cover in any position under an angle from 0° to 90°. Pan foot must be attached to the ground.

000.PE-025N

Location of drain grid



The picture is for reference only; final product may be slightly different from the presented example.