


**Model:** 000.KG-4s/PE-1 800x700x900 [mm]

**Gas cooker**

Burners	Number	1	3
Ø		60 mm 	90 mm 
Power rating		2.5 kW 2150 kcal/h	3.5 kW 3010 kcal/h

**Power rating** 13 kW

**Electric oven**

**Power rating** 3.5 kW

**Temperature range** 50°–250°C

**Chamber** **Chamber dimensions** 575x450x316 mm

**GN** 2 x GN 1/1

**Rated voltage, type of current** 400V 3N~

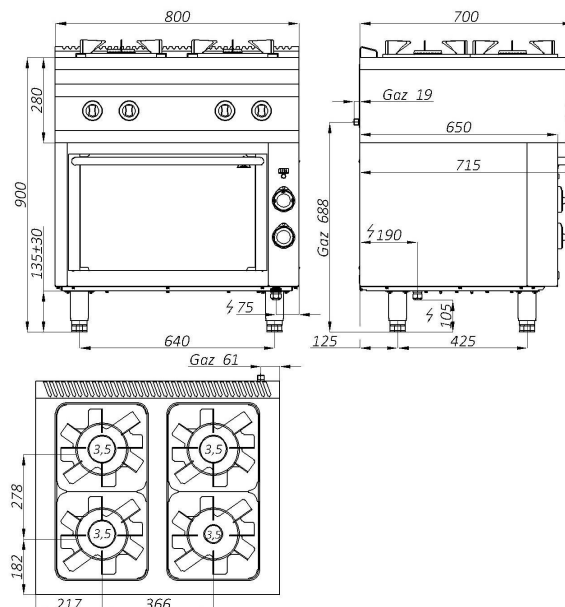
**Gas connection** R 1/2

<b>Gas consumption</b>	<b>E G20 [20mbar]</b>	m <sup>3</sup> /h	1.25
	<b>Lw G27 [20mbar]</b>	m <sup>3</sup> /h	1.66
	<b>Ls G2.350</b>	m <sup>3</sup> /h	1.90
	<b>3B/P G30 [37mbar]</b>	kg/h	0.53

**Description:**

Gas cooker is made of high-grade stainless steels. Pressed working plate made of AISI 304 stainless steel with thickness ≠ 1.5mm. Burners made of cast-iron. Grates made of stainless steel. Cooker is equipped with pilot burner with flame safety device. Bar grate included. Glass door for viewing of products being processed.

**000.KG-4s/PE-1**



The picture is for reference only; final product may be slightly different from the presented example.